

# The Messenger

## Perry United Methodist Church

### Perry, Georgia

1002 Carroll Street  
P.O. Box 73  
Perry, GA 31069

Phone: 478-987-1852  
Fax: 478-988-1428  
E-Mail: pumc@comsouth.net

Volume 36

September 28, 2011

October Issue

Number 10

### Consecration Sunday Is Coming October 30th



Congregations that approach financial stewardship from a biblical perspective do not view the money

Christians give to their church merely as a way to pay its bills. Rather, such congregations see financial contributions as a way to help people grow spiritually in their relationship with God by supporting their church's mission and ministry with a percentage of their incomes.

Our congregation's finance committee has selected the New Consecration Sunday Stewardship Program as a way to teach the biblical and spiritual principles of generous giving in our stewardship education emphasis this year.

New Consecration Sunday is based on the biblical philosophy of the need of the giver to give for his or her own spiritual development, rather than on the need of the church to receive. Instead of treating people like members of a social club who should pay dues, we will treat people like followers of Jesus Christ who want to give unselfishly as an act of discipleship. New Consecration Sunday encourages people toward proportionate and systematic giving in response to the question, "What percentage of my income is God calling me to give?"

During morning worship on Consecration Sunday, we are asking our attendees and members to make their financial commitments to our church's missionary, benevolent, and educational ministries in this community and around the world.

Every attendee and member who completes an Estimate of Giving Card does so voluntarily by attending morning worship on Consecration Sunday. We urge people to attend who feel strongly opposed to completing a card. The procedure is done in such a way that no one feels personal embarrassment if he or she chooses not to fill out a card.

We will do no home solicitation to ask people to complete cards. During morning worship our guest leader will conduct a brief period of instruction and inspiration, climaxed by members making their commitments as a confidential act of worship.

*continued top of next column ~*

We will encourage participation in Consecration Sunday events through the Consecration Sunday team and governing board members. We will make every effort to inform, inspire, and commit everyone to attend Consecration Sunday worship.

Look for more information about Consecration Sunday over the next few weeks. Until then, plan to be in church on October 30th to celebrate this very important spiritual event with your church family.

Thanks in advance for your enthusiastic participation in Consecration Sunday events.

*Dave Cyr, Stewardship Chairman*

### SUNDAYS IN OCTOBER 2011

9:00 a.m. and 11:00 a.m. Worship Service  
10:00 a.m. - Sunday School  
4:45 p.m. - Handbell Quartet Rehearsal  
6:00 p.m. - Evening Worship Service  
7:00 p.m. - Sanctuary Bells Rehearsal

**UMYF** - See inside Youth Page for Youth Activities info

#### Mondays

**Oct. 10 - Church Office Closed**

#### Tuesdays

11:00 a.m. - JOY Choir Rehearsal  
**Oct. 11** - 5:30 p.m. - Finance Committee Meeting - Conf. Rm  
**Oct. 11** - 7:00 p.m. - Trustees Committee Meeting - Conf. Rm

#### Wednesdays

**Wed. Night Supper** - for more information, see back page  
6:45 p.m. - Sanctuary Choir Rehearsal

#### Thursdays

**Oct. 6 - Fair Begins**

#### First Thursday

**12 p.m. - Prime Time Luncheon (registration required)**  
For info on Bible Studies, see back page

### GREETERS for OCTOBER 2011

| Date           | 9:00 a.m.                  | 11:00 a.m.                   |
|----------------|----------------------------|------------------------------|
| <u>Oct. 2</u>  | Ben and Mildred Newberry   | Chip and Laura Harrison      |
| <u>Oct. 9</u>  | Gary and Peggy Crum        | Martin and Kimberly Pinckney |
| <u>Oct. 16</u> | Chesley and Evelyn Cawthon | Ed and Tamatha Beckham       |
| <u>Oct. 23</u> | Draper and Dawne Watson    | Alan and Felicia Everidge    |
| <u>Oct. 30</u> | Roland and Teddie Berry    | Billy and Jeanne Bledsoe     |

## Mission . . . Possible!

The Missions Committee wants you to be in the know about the mission work of PUMC. This month we are asking for help in the area of Missions. . . .

**Kings Chapel Elementary has a Good News Club** We recently donated money to this organization to help provide t-shirts for the club members. This is our church reaching out to our community.

**ERSLA (Emergency Response Services of Latin America)** Rodney McDonald will be presenting the September 28<sup>th</sup> Wednesday Night Supper program. Come see your Missions dollars at work!

**Operation Christmas Child**, the Discoverers Sunday School class recently packed 57 OCC boxes for ages 2-4. If your class would like to do the same, contact Linda Mason.

**Snax Sax:** We continue to pack 190 bags each week. There are 100 people involved in this mission. They help pack the bags, buy the food, unpack the food, and deliver the food. If you would like to be a part of this ministry, contact Linda Mason. A person is needed to pick up groceries from Sam's once a month. If you can help with this, please contact Linda Mason.

**Soles4Souls:** Many thanks to all of you that donated shoes for this project. Look for the amount donated in next month's Messenger.

As you can see, your Missions Committee is very busy and needs your help. We always need your prayers as well. If you are interested in helping out with any of these jobs, contact Linda Mason @ 478-997-1582 or [evanmason@comsouth.net](mailto:evanmason@comsouth.net)

### Special "2011" Dates

- October 2:** Acolyte Recognition Sunday - 11 a.m.  
Children's Led Worship - 6 p.m.
- October 23:** Children's Church - 9 a.m.
- October 24:** Administrative Board Dinner
- October 30:** Consecration Sunday  
Trunk or Treat!
- November 6** - All Saints Sunday
- November 20** - Charge Conference and Thanksgiving Sunday
- November 29** - Advent by Candlelight

### PLEASE PRAY FOR OUR MILITARY

**Seaman Brook Maynard**, nephew of Bonnie West  
**E3 Brooks W. Warren, US Air Force**, grandson of Bill and Mary Warren  
**Airman Jamie Price, USAF, A1C Nathan Dowling, USAF, Seaman Walter Hartley, USN** - nephews of Dot Price  
**PFC Christopher Black, ANG**, fiancé of Dot Price's niece, Ashley Price  
**LCpl Zachary G. Vogt, USMC**, grandson of June Vogt  
**Master Gunnery Sgt Joel Whitmoyer**,  
son-in-law of Skip and Betty Dawkins.  
**Sr A Rick A. Maye and Christian H. Craig, 330 MP Company/SPS**,  
grandsons of Jane Whipple  
**Capt. Matt McNeal**, nephew of Susan Pierce  
**Capt. William R. Wright**, grandson of Elmo and Elaine Wright  
**Capt. Phillip Ferris**, son of Mark and Gloria Ferris  
**Please help the church office keep this list updated. 987-1852 x21**

## This Month in Music

### Farewell to Music Associate Miriam Marchetti

Music Associate Miriam Marchetti has moved to Rome, Ga., to be near her family. We have been so richly blessed by Miriam's talents and by her sweet spirit. For four years Miriam provided us with exceptional vocal and piano solos, and her accompanying skills were outstanding. We wish for Miriam the very best.

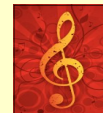
### Children's Choir Notes

The children's choirs will sing during the Children's Led Worship Service on Sunday evening, October 2, at 6:00, and during the morning worship services on Sunday, October 23.

### Jane Kimbrel to Perform Pipe Organ Recital at St. Joseph's Catholic Church in Macon

On Thursday, October 20 at noon I will perform a 30 minute pipe organ recital at St. Joseph's Catholic Church in Macon, located at 830 Poplar Street. A light soup, salad and sandwich lunch will be served for \$5 in the fellowship hall following the performance.

*Blessings,  
Jane*



### "ROLAND FALL DAY"

The Perry Farmers Market and the City of Perry are honoring one of our own, Associate Pastor Roland Fall, for his support of and his hard work for, the Perry Farmers Market. On Saturday, October 1 at 10 a.m., please join Roland at The Perry Farmers Market for this celebration.

## OPERATION LEATHERNECK!

This United Methodist Men sponsored project, an effort to collect and ship much needed personal care items to a group of Marines in Afghanistan, got off to a great start in August. Due to the generosity of the members of PUMC, we collected 19 boxes of baby wipes, 12 boxes of trail mix snacks and 4 boxes of beef jerky. In addition, several hundred dollars has been donated to cover shipping costs. A total of 35 priority mail boxes were shipped on August 24, and we received word that many of these had arrived before the end of the month. Many thanks to the individuals and Sunday School Classes who donated items and/or cash to support this effort. The UMM will continue this effort for the foreseeable future, and requests your continued prayers and support as we express our appreciation to a group of servicemen and women who are giving so much for us.

### GRACE VILLAGE ~ Perry's Women's Homeless Shelter NEEDS VOLUNTEER INSTRUCTORS

Share weekly, monthly, quarterly. One to two hour sessions needed during the day but we'll work with your schedule. Cooking, domestic skills, personal finances, arts and crafts, gardening, computer skills, personal fitness, health, job skills. Let us know what you can offer. Contact Larry Wood - 478-218-2274. [pvo@windstream.net](mailto:pvo@windstream.net)



# OCTOBER

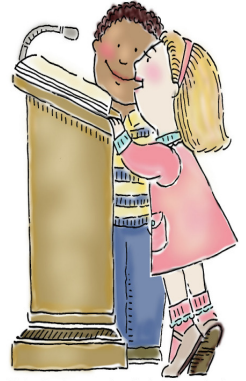


**Acolyte Recognition**  
**October 2nd**  
**11am**

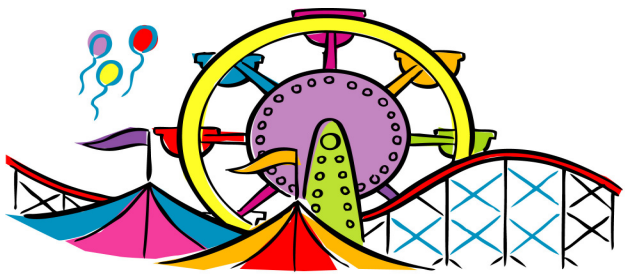


No W&SP October 5th due to Fall Break and October 12th for the Fair! See you October 19th at 4:00! Children will sing in church on October 23rd at the 9 and 11 am services!

**Children's Led**  
**Worship**  
**Service**  
**October**  
**2nd**  
**6pm**



Children's Worship Service



## AT THE FAIR



*Trunk or Treat*  
**October 30th**  
**5:30 pm**



Fall's Splendor

**Rock Ranch Family**  
**Fun Day!**  
**October 22nd**  
**Sign up by Oct. 7th**  
**\$14/person**  
**8:30 am until...**

# YOUTH NEWS

**MYF SCHEDULE**  
**FOR OCTOBER**

**10/2**  
**SNACK SUPPER**  
**@5:30PM**  
**CHILDREN'S LED**  
**WORSHIP @ 6PM**

**10/9**  
**NO MYF:**  
**FAIR WEEK**

**10/16**  
**REGULAR SCHEDULE**

**10/23**  
**REGULAR SCHEDULE**

**10/30**  
**TRUNK OR TREAT**

MYF FALL  
SCHEDULE

5:00 P.M.- MIDDLE SCHOOL  
 5:45 P.M.- SNACK SUPPER  
 6:15 P.M.- HIGH SCHOOL

**DINNER**  
**THEATER**

PRACTICE SUNDAYS AT 4 PM.  
 COME AND JOIN THE CAST!!

**TRUNK OR TREAT @**  
**Whipple Farm**  
**OCTOBER 30**

**MEET AT THE CHURCH AT 4:30 TO HELP KRISSY SET UP!**  
**WEAR YOUR COSTUMES!**  
**WE'LL BE BACK AROUND 8:00 p.m.**

**WEDNESDAY**  
**BREAKFAST &**  
**BIBLE STUDY**

**PRAYER BREAKFAST:**  
**7:00 A.M.**  
**BIBLE STUDY:**  
**6:30 P.M. TO 7:30 P.M.**

THE MESSENGER (PSPS 370-830) is published monthly by Perry United Methodist Church, 1002 Carroll Street, Perry, GA 31069  
POSTMASTER: Send address changes to THE MESSENGER, P.O. Box 73, Perry, GA 31069

| 2011 Average Attendance | August | Sept. |
|-------------------------|--------|-------|
| Morning Worship         | 435    | 424   |
| Sunday School           | 265    | 267   |
| Evening Worship         | 58     | 38    |
| Youth                   | 37     | 36    |

| Finance Report 2011   | September  |
|-----------------------|------------|
| Budget Receipts       | 74,399.37  |
| Needed Year to Date   | 816,761.79 |
| Disbursements to Date | 795,251.82 |
| Received Year to Date | 804,906.40 |

| Finance Report 2011   | August     |
|-----------------------|------------|
| Budget Receipts       | 81,190.95  |
| Needed Year to Date   | 780,826.00 |
| Disbursements to Date | 703,587.07 |
| Received Year to Date | 730,507.03 |

### MINISTERIAL SCHOLARS

Scholar Speaks: "Words cannot adequately express the blessing that this scholarship represents. God is using your church to help prepare men and women to serve Him in the South Georgia Conference. I pray that He will bless your church for your partnering work with Him."

*Tom Dent,*

*2011 recipient of Perry UMC Ministerial Scholarship*

### UMW CIRCLES

**BYKOTA** ~ Monday, October 10, 3 p.m.

Hostess: Jane Chapman

Program: Marguerite Messer

**The Mary Marthas** - Tuesday, October 11, 6:30 p.m.

Hostess: Suzanne Powell

**The Say So Circle** - Monday, October 10, 12:00 p.m.

Hosts: Joyce Dunham, Ruth Hartley, Martha Johnson, Janet Nunn, Margaret Talton, Sally Ann Wolf

### Ladies Bible Studies

Each Study is held in the Conference Room

**Mondays - 4:30 p.m.** - "Wising Up"

**Mondays - 6:45 p.m.** - "Here and Now, There and Then"

**Tuesdays - 9:00 a.m.** - "Here and Now, There and Then"

**Wednesdays - 9:30 a.m.** - "Esther" by Beth Moore

### PRIME TIME LUNCHEON

October 6, 2011

**Play ~ BINGO!**



Make your reservations by 9 a.m. on the Tuesday before the luncheon. If you make a reservation and find that you cannot attend, please call the church office and cancel by 9 a.m. on Tuesday before the luncheon. If cancellation is not made by the deadline, the payment of \$5 per person is due. For reservations call 987-1852, Ext. 21

**Menu:** *Baked Pasta with Meat Balls, Italian Salad, Bread Sticks, Dessert.*



### Perry UMMen

October 17 - 6:30 p.m. Fellowship Hall

Father/Son Get-Together

(for this event, "son" means any age son, grandson, nephew, neighbor, etc.)

As long as it's a guy.)

Watch video highlights of the World Series!

No reservations required. Dinner Served

### ADVENT BY CANDLELIGHT

The UMW will host its annual *Advent by Candlelight* on Tuesday, November 29 at 7 pm. In the Fellowship Hall. This is a lovely affair, with each table adorned with traditional Christmas decorations. Dessert and coffee are served, and an inspirational program is presented. There is no charge, but an offering is taken for local missions. This year, the designated mission is the prevention of child trafficking. All women of the church are invited to attend this outstanding Christmas event! Call the church office for reservations. (reservations required/childcare provided)

*Frances Worrall*

### "The Relevancy of Prayer in Our Time" Short-Term Bible Study Led by Rev. Roland Fall

Thursday Nights: 7:00 - 8:30, Sept. 29 ~ Nov. 3  
Friday Mornings: 10:00 - 11:30, Sept. 30 - Nov. 4 - Conf. Rm.

To register: Contact Rev. Fall @ 951-1614, refall2009@gmail.com or call the church office @ 987-1852 x-27

### Staff Telephone Extensions

|                      |                       |
|----------------------|-----------------------|
| 30 - Kim Cassell     | 24 - Krissy Walker    |
| 29 - John Williams   | 23 - Polly Passinault |
| 28 - Jane Kimbrel    | 22 - Rev. Jenny       |
| 27 - Rev. Fall       | 21 - Ginger Vance     |
| 25 - Kyle Barfield   | Alice Releford        |
| 26 - Amanda Barfield | 987-1954              |

### UNWILLINGLY ABSENT

If you are unwillingly absent, or if you have a loved one who is unwillingly absent, you are invited to receive the Lord's Supper on Communion Sundays at home. To make plans to do so, please call Rev. Roland Fall at the church office (987-1852 ext. 27) and he will make all of the arrangements.

### Church Staff and Our Methodist Connection

|                          |  |
|--------------------------|--|
| Rev. Jenny Jackson-Adams | Senior Pastor                            |
| Rev. Roland Fall         | Associate Pastor for Congregational Care |
| Kim Cassell              | Assistant to the Pastor for Evangelism   |
| Dr. Billy Key            | Pastor Emeritus                          |
| Krissy Walker            | Children's Pastor                        |
| Kyle Barfield            | Youth Pastor                             |
| Amanda Barfield          | Director of Christian Education          |
| Dr. Jane Kimbrel         | Director of Music Ministries/Organist    |
| Deborah Walker           | Pianist                                  |
| Dicky Gilbert            | Audiovisual Technician                   |

John Williams, Building Supt.  
Alice Releford, Custodian  
Polly Passinault, Financial Secretary  
Ginger Vance, Admin. Assistant

Bishop James R. King, Jr.  
Dr. Wayne Moseley

### Nursery Workers

Christie Rooks  
Amanda Barfield  
Cassie Lyon  
Chelsea Thigpen  
Tessa Hilgendorf

Resident Bishop  
District Superintendent

For information about **Wednesday Night Supper**, check [www.perryumc.org](http://www.perryumc.org) and/or the back of the PUMC Sunday bulletins.  
\$7/Adult \$3.25/Child  
5:15 ~ 6 p.m.  
Program at 6 p.m.

**INFORMATION FOR THE NOVEMBER MESSENGER IS DUE BY NOON ON WEDNESDAY, OCTOBER 19**  
Call the church office to submit info, 987-1852, ext 21